

Storm Protection

```
[et_pb_section bb_built="1" admin_label="section"][et_pb_row
admin_label="row" background_position="top_left"
background_repeat="repeat"
background_size="initial"][et_pb_column type="4_4"][et_pb_text
background_layout="light" text_orientation="left"
use_border_color="off" border_color="#ffffff"
border_style="solid" module_alignment="left"
background_position="top_left" background_repeat="repeat"
background_size="initial"]
```

Custom Storm Protection Products

Click a Tab below to view options for each type of shutter.

[Click here to view Job Photo Gallery](#)

```
[/et_pb_text][et_pb_tabs admin_label="Shutters Tabs"
active_tab_background_color="#126dbc"
inactive_tab_background_color="#898989"
tab_text_color="#ffffff" border_style="solid"
background_position="top_left" background_repeat="repeat"
background_size="initial" _builder_version="3.0.75"]
[et_pb_tab title="Colonial Shutters"
background_position="top_left" background_repeat="repeat"
background_size="initial" _builder_version="3.0.75"
use_background_color_gradient="off"
background_color_gradient_start="#2b87da"
background_color_gradient_end="#29c4a9"
background_color_gradient_type="linear"
background_color_gradient_direction="180deg"
background_color_gradient_direction_radial="center"
background_color_gradient_start_position="0%"
background_color_gradient_end_position="100%" parallax="off"]
```

```
parallax_method="on"          background_blend="normal"  
allow_player_pause="off"      tab_font_select="default"  
tab_font="||||" body_font_select="default" body_font="||||"  
body_text_align="left"]
```



Colonial Shutters

Our custom built colonial shutters are patterned after original wooden shutters. They are available in louvered or board and batten styles. All styles are manufactured of powder coated aluminum to ensure strength and lasting beauty. These shutters enhance the architecture of the home while protecting against violent weather.

[Bahama/Colonial Shutters Brochure](#)

Color Options

Additional colors are available for an upcharge and can be found [here](#).

*Please note these colors are reference examples only and actual product color may differ slightly.

Glossy Color Options



Wineberry



Taupe



**Sudan
Brown**



Redwood



**Military
Blue**



**KoKo
Brown**



**Juniper
Green**



Ivy Green



Ivory



Bronze



Brick Red



Beige

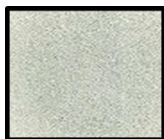
Textured Color Options



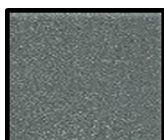
White



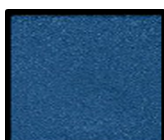
Wheat



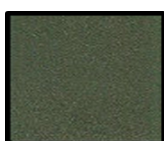
Weatherable Gray



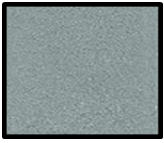
Weatherable Dark Gray



Thunder Blue



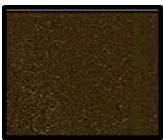
Storm Gray



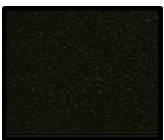
Gray



Forest
Green



Chestnut



Black

[Bahama/Colonial Shutters Color Samples](#)

```
[/et_pb_tab][et_pb_tab title="Bahaman Shutters"  
background_position="top_left" background_repeat="repeat"  
background_size="initial" _builder_version="3.0.75"
```

```
use_background_color_gradient="off"  
background_color_gradient_start="#2b87da"  
background_color_gradient_end="#29c4a9"  
background_color_gradient_type="linear"  
background_color_gradient_direction="180deg"  
background_color_gradient_direction_radial="center"  
background_color_gradient_start_position="0%"  
background_color_gradient_end_position="100%" parallax="off"  
parallax_method="on" background_blend="normal"  
allow_player_pause="off" tab_font_select="default"  
tab_font="||||" body_font_select="default" body_font="||||"  
body_text_align="left"]
```



Bahaman Shutters

Bahaman or Bermuda shutters are manufactured in the same manner as the Colonial shutters, from powder coated aluminum. These shutters allow visibility from inside while shading the window from the outside. Bahama shutters open and close in seconds and are virtually maintenance free.

[Bahama/Colonial Shutters Brochure](#)

Color Options

Additional colors are available for an upcharge and can be found [here](#).

*Please note these colors are reference examples only and

actual product color may differ slightly.

Glossy Color Options



Wineberry



Taupe



**Sudan
Brown**



Redwood



**Military
Blue**



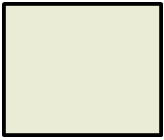
**KoKo
Brown**



**Juniper
Green**



Ivy Green



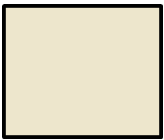
Ivory



Bronze



Brick Red



Beige

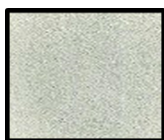
Textured Color Options



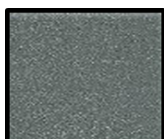
White



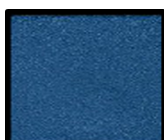
Wheat



**Weatherable
Gray**



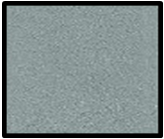
**Weatherable
Dark
Gray**



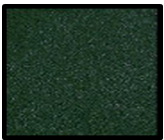
**Thunder
Blue**



Storm
Gray



Gray



Forest
Green



Chestnut



Black

[Bahama/Colonial Shutters Color Samples](#)

```
[/et_pb_tab][et_pb_tab title="Rolling Shutters"
background_position="top_left" background_repeat="repeat"
background_size="initial" _builder_version="3.0.75"
use_background_color_gradient="off"
background_color_gradient_start="#2b87da"
background_color_gradient_end="#29c4a9"
background_color_gradient_type="linear"
background_color_gradient_direction="180deg"
background_color_gradient_direction_radial="center"
background_color_gradient_start_position="0%"
background_color_gradient_end_position="100%" parallax="off"
parallax_method="on" background_blend="normal"
allow_player_pause="off" tab_font_select="default"
tab_font="||||" body_font_select="default" body_font="||||"
body_text_align="left"]
```



Rolling Shutters

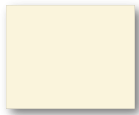
Roll-up shutters can be manual or electric and offer security, privacy and protection. Many customers use roll-ups to block out the sun, for privacy and of course for storm protection. Rollup shutters are available in white, bronze, ivory and beige.

Color Options

*Please note these colors are reference examples only and actual product color may differ slightly.



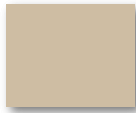
white



Ivory



Bronze



Beige

```
[/et_pb_tab][et_pb_tab title="Accordion Shutters"
background_position="top_left" background_repeat="repeat"
background_size="initial" _builder_version="3.0.75"
use_background_color_gradient="off"
background_color_gradient_start="#2b87da"
background_color_gradient_end="#29c4a9"
background_color_gradient_type="linear"
background_color_gradient_direction="180deg"
background_color_gradient_direction_radial="center"
background_color_gradient_start_position="0%"
background_color_gradient_end_position="100%" parallax="off"
parallax_method="on" background_blend="normal"
allow_player_pause="off" tab_font_select="default"
tab_font="||||" body_font_select="default" body_font="||||"
body_text_align="left"]
```



Accordion Shutters

The Accordion shutter is available in a variety of ratings, depending on the need of the customer. These shutters are used for security as well as storm protection. Accordion shutters are Permanently installed on the house; therefore no storage space is needed.

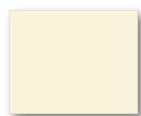
[Accordion/Rolling Shutter Brochure](#)

Color Options

*Please note these colors are reference examples only and actual product color may differ slightly.



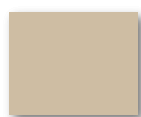
white



Ivory



Bronze



Beige

```
[/et_pb_tab][et_pb_tab title="Storm Panels"
background_position="top_left" background_repeat="repeat"
background_size="initial" _builder_version="3.0.75"
use_background_color_gradient="off"
background_color_gradient_start="#2b87da"
background_color_gradient_end="#29c4a9"
background_color_gradient_type="linear"
background_color_gradient_direction="180deg"
background_color_gradient_direction_radial="center"
background_color_gradient_start_position="0%"
background_color_gradient_end_position="100%" parallax="off"
parallax_method="on" background_blend="normal"
allow_player_pause="off" tab_font_select="default"
tab_font="||||" body_font_select="default" body_font="||||"
body_text_align="left"]
```



Storm Panels

Storm panels are the most economical form of hurricane protection and are stackable to minimize storage space. We offer aluminum .050 Hurricane Storm Panels and galvanized steel. Dade rated panels provide protection, value and peace of mind.

Also available in clear Lexan panels. Mix and match the panels to allow light to filter into each window or add one Lexan panel per room.

[Storm Panel Brochure](#)

```
[/et_pb_tab][et_pb_tab title="Garage Door Brace"
background_position="top_left" background_repeat="repeat"
background_size="initial" _builder_version="3.0.75"
```

```
use_background_color_gradient="off"
background_color_gradient_start="#2b87da"
background_color_gradient_end="#29c4a9"
background_color_gradient_type="linear"
background_color_gradient_direction="180deg"
background_color_gradient_direction_radial="center"
background_color_gradient_start_position="0%"
background_color_gradient_end_position="100%" parallax="off"
parallax_method="on" background_blend="normal"
allow_player_pause="off" tab_font_select="default"
tab_font="||||" body_font_select="default" body_font="||||"
body_text_align="left"]
```

The Garage Door is the Largest Opening On Your Home.

Protect your home and family from hurricane-force winds with our Windloaded Garage Doors.

Don't need a new garage door? No problem, we can retrofit most existing garage doors with a Windload Kit.



By adding horizontal re-enforcement struts to the back of the door on at least 2 of the sections and installing brackets to support a vertical windpost an existing garage door can be made to withstand higher windspeeds. Larger doors usually require more than one post depending on the size and type of door.

[Garage Door Brace Kit Brochure](#)

[/et_pb_tab]

[/et_pb_tabs][/et_pb_column][/et_pb_row][/et_pb_section]