

# COUNTER FIRE DOORS

## Practical Design Applications (for fire rated walls)

- Service Window Openings
- Cafeterias
- Healthcare Facilities
- Educational Facilities
- Hospital/Public Space



## Benefits

- UL Labeled - 3, 1-1/2, 1 and 3/4 hour labels.
- Wall Construction - UL approved for mounting to rated drywall, masonry or steel walls.
- Size Flexibility - Each unit is built to exact requirements.
- Compact Storage - Curtain stores in an overhead coil that is completely supported by the guides.
- Durability - Commercial duty design. Little to no routine maintenance.
- Drop Testing/Resetting - Simplified systems available.
- Repairs - Job records are retained and parts are readily available.

## Available Options

- UL labeled stainless steel or plastic laminate countertops
- Advanced Fire Door Closing Systems
- Battery Back Up Devices
- Annunciators
- LEED® calculations
- Cylinder or slide bolt locks
- Sensing Edge for motorized units
- Operator covers for exterior mounted units or exposed operators below 8'-0" high
- Sill angles

## Auto-Test™ Operated Counter Fire Doors

These Chain, Crank, and Motor Operated Counter Fire Doors are directly wired into the buildings' fire alarm system or local detectors. They will automatically close during an alarm activation at a controlled rate not to exceed 12" per second and without releasing spring tension. Ideal for applications requiring frequent testing or when it is difficult to access the operating mechanism. These doors can be reset from floor level by facility personnel.

## Simple-Test™ Operated Counter Fire Doors

Provides the same fire protection of our Auto-Test Chain, Crank, and Motor Operated systems but are better suited when connection to an alarm system or local detector is not required. These fuselink activated Counter Fire Doors do not release spring tension upon activation. Chain and crank applications are ideal when power is not available at the opening.

## Push-Up Operated Counter Fire Doors

Provides the same fire protection you would expect from a Cookson Fire Door in a compact, push-up operated, counter door design. Fuselink activation initiates controlled door closure by releasing spring tension.

## Auto-Test™ Tube Motor Operated Counter Fire Doors

A solution for strict dimensional limitations around the header or where aesthetics are required. Concealed within the Counter Fire Door's shaft assembly, Auto-Test Tube Motor Operators are ideal for openings with tight clearances around the coil area or to neatly conceal the operator and drive components. Upon activation, the Counter Fire Doors will close without releasing spring tension or disengaging the operator drive mechanism, providing simple testing and resetting of the closing system.



## Counter Fire Door With Sill and Trim

Complete with 16 gauge stainless or steel frame and 14 gauge stainless steel sill, these units are ready for mounting into masonry or rated dry wall openings. Stainless steel is 300 series #4 finish, steel frames are powder coated. UL 1-1/2 hour labeled, manual push-up standard or tube motor operated. UL "S" label available.



## Smoke Control Counter Fire Doors

Designed to obstruct the spread of smoke from one area of a building to another, these units are tested in accordance with UL 1784 Air Leakage Test for Door Assemblies. Bearing a UL label, they meet NFPA 105 criteria for Installation of Smoke Control Door Assemblies. Protects against the loss of life and property.



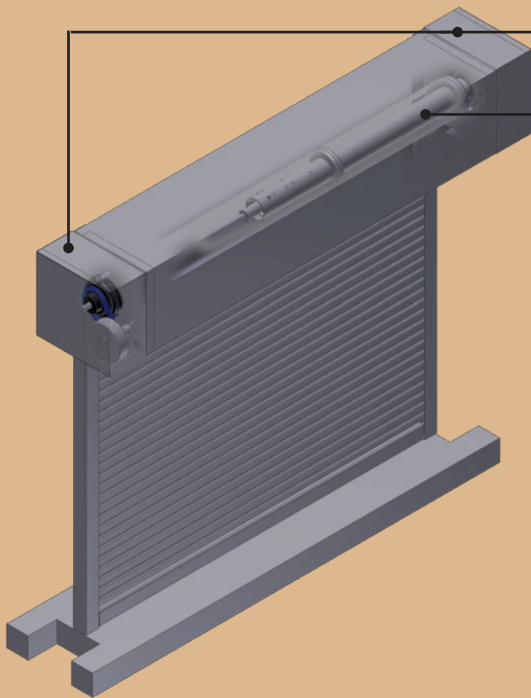
**The Cookson Company, Inc.**

Dimensions shown are for initial design. For final design, specifications, and to view the complete Cookson Product line, visit [cooksondoor.com](http://cooksondoor.com).

# THE PREFERRED



## COUNTER FIRE DOOR



Auto-Test™ Tube Motor

Minimum projection on either side of the coil for tight clearances

Motor is concealed within the barrel

Rated for 10 cycles per day, 4 per hour

Available for 3 hour, 1-1/2 hour and 3/4 hour ratings

Can be tested and reset from floor level

Choice of Finishes

FinalCote™

(Standard) (Tan, White, or Gray)

ColorCote™

180 Standard Colors (Optional)

Unlimited Custom Colors (Optional)

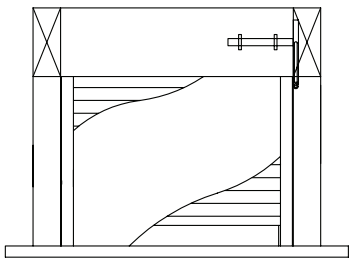
Stainless Steel #4 Polish

### Special Feature Options

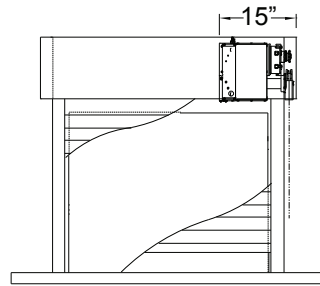
- **UL 1-1/2 Hour Labeled Countertops** - Plastic laminate countertops are available in a range of standard laminates in a single piece up to 10' wide, and in two pieces with center joint to 16' wide. 14 gauge, #4 finish stainless steel countertops are custom designed to a maximum wall opening width of 11' 2" for face of wall units, 11' 10" for between jambs, for a maximum 12" wall thickness.
- **Simple-Test Closing Systems** - Available in addition to advanced Auto-Test line, economical, fuselink activated systems close fire rated doors without releasing spring tension, avoiding dangerous resetting process when connection to a central alarm system in not required or power is unavailable.
- **Battery Back Up Devices** - Prevents the door from closing due to a power failure for a minimum of 4 hours. For Auto-Test Operators, also functions as a DC power source for local warning devices and detectors to keep them functioning during a power outage.
- **Annunciators** - Safety devices that provide a visual and/or audible advanced warning when the fire door is about to close. Can be activated upon alarm signal or loss of power when supported by a battery back-up device.



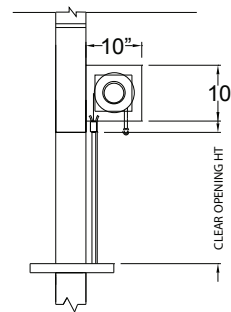
### TYPICAL DETAILS



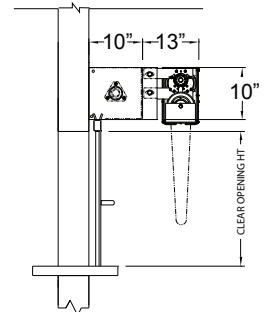
AUTO-TEST TUBE MOTOR ELEVATION



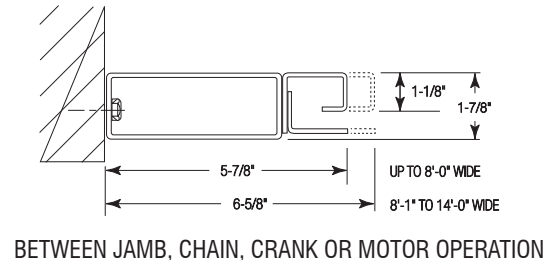
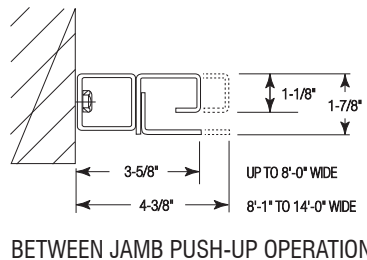
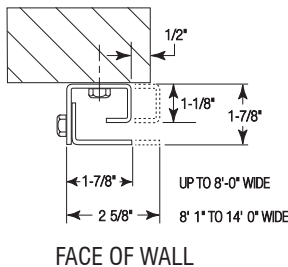
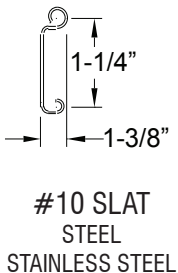
AUTO-TEST CHAIN ELEVATION



AUTO-TEST TUBE MOTOR SECTION



AUTO-TEST CHAIN SECTION



P.O. Box 23880  
Phoenix, AZ 85063

Phone: (800) 390-8590  
Fax: (866) 448-6804



**The Cookson Company, Inc.**

Visit our website at [Cooksondoor.com](http://Cooksondoor.com)  
Or e-mail us at [Marketing@Cooksondoor.com](mailto:Marketing@Cooksondoor.com)  
[Facebook.com/The.Cookson.Company](https://www.facebook.com/The.Cookson.Company)

© 2012