

# INSULATED SERVICE FIRE DOORS



*Philips Arena - Atlanta, Georgia*

## Fire Door Rating

The Cookson Insulated Fire Door is ideal when an opening in a fire wall requires a door that will reduce energy costs as well as serve as a fire barrier. Approved by international testing laboratory Warnock Hersey, Cookson insulated fire doors have a 4 hour, 3 hour, 1 ½ hour and ¾ hour rating and can be mounted on concrete, masonry, structural steel and gypsum board walls.

## Insulated Door Properties with a STC Rating

The Cookson Insulated Fire Door utilizes mineral wool fire resistant insulation to provide a R value of 5.3 and a Flame Spread Index of 10 with smoke developed index of 5. Not only does The Cookson Insulated Fire Door reduce energy costs but it also can serve as a sound barrier. The Cookson Insulated Fire Door has an STC rating of 27.

## Weather-stripped Perimeter

The Cookson Insulated Fire Door is furnished with brush weather-seals on the guides and lintel as well as a solid flexible Pyroglass astragal to reduce moisture, air, and dust infiltration.

## Easiest Fire Door to Reset

The Cookson Company Insulated Fire Door is the easiest fire door to reset. It is available in both the Auto-Test™ and Simple-Test™ models. These systems are available in Chain, Crank, and Motor operation and automatically close upon activation without releasing spring tension or disengaging the operator drive mechanism. The Auto-Test Fire Door Closing System is the most advanced on the market. Actuated by smoke detector or building alarm system, it automatically resets itself once the alarm is cleared. The Simple-Test Fire Door Closing System requires fuselink activation and is reset by reconnecting the fuselink after the door has been tested or actuated.

## Cookson is the Fire Door Specialist

With innovative Fire Door products since 1938 The Cookson Company's Insulated Fire Door provides reliability and durability. Due to simplicity of design, Cookson's Fire Doors offer dependable automatic closings when activated during a test or in an emergency situation. Cookson Fire Doors can be tested as frequently as desired to ensure years of building and occupant safety, while providing energy efficient building closure.



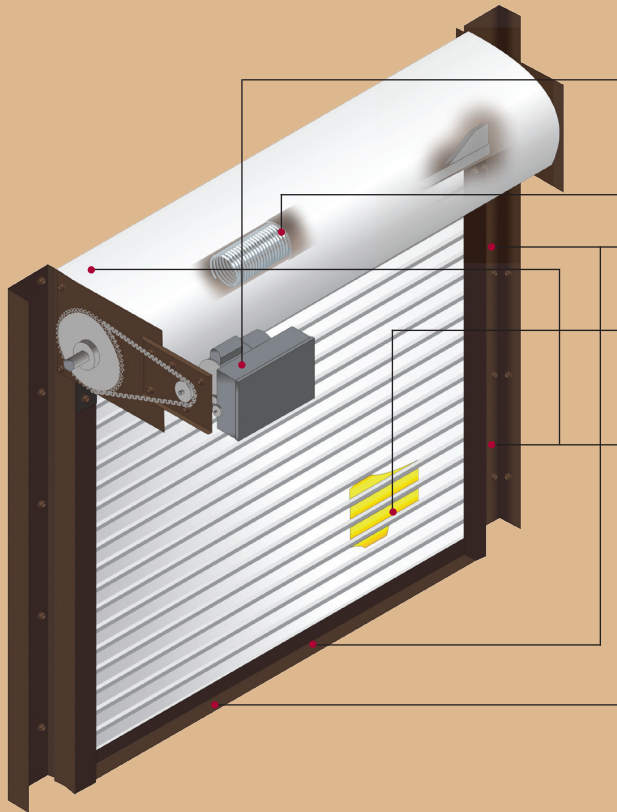
**The Cookson Company, Inc.**



Dimensions shown are for initial design. For final design, specifications, and to view the complete Cookson Product line, visit [cooksondoor.com](http://cooksondoor.com).

# THE PREFERRED

## INSULATED ROLLING FIRE DOOR



- Internal Planetary Gearing controls automatic closing speed not to exceed 9 inches per second (Auto-Test Motor) and 12 inches per second (Simple-Test Chain and Crank, Auto-Test Chain and Crank)
- Oil tempered torsion springs designed for 50,000 life cycles
- Structural angle guides and bottom bar make door less vulnerable to damage that could prevent the door from fully closing
- Exclusive interlocking slats provide energy efficiency and a finished appearance inside and out. Mineral Wool fire resistant insulation provides an R value of 5.3, Flame Spread Index of 10 and a STC rating of 27.
- Heavy duty brush weather-strip on the guides and lintel reduce air and dust infiltration.
- The bottom of the door is sealed by a flexible, solid Pyroglass astragal.

Available UL "S" Label for smoke protection. Control and contain fires by limiting oxygen flow.

Available for 4 hour, 3 hour, 1-1/2 hour and 3/4 hour ratings

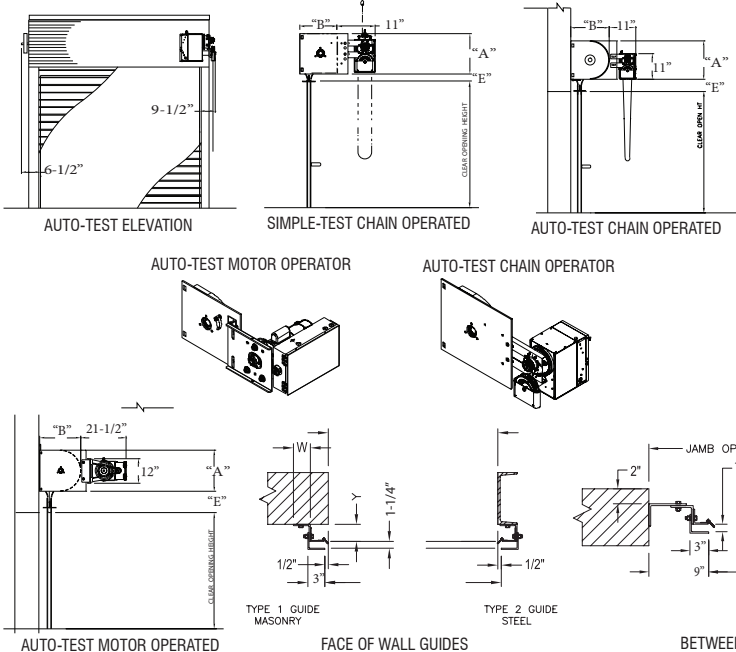
Approved for all wall types (concrete, masonry, structural steel, structural steel with gypsum board)

### Choice of Finishes

- FinalCote™ (Standard: Tan, Gray and White)
- ColorCote™ in 180 Standard Colors (Optional)
- Unlimited Custom Colors (Optional)
- Stainless Steel (#4 Polish)

COMPONENT DIMENSIONS				
AREA	A	B	W	Y
1	16.0"	17.0"	2.5"	2.5"
2	16.0"	17.0"	3.0"	3.0"
3	18.0"	19.0"	2.5"	3.0"
4	18.0"	19.0"	2.5"	3.5"
5	18.0"	19.0"	3.0"	3.0"
6	18.0"	19.0"	3.0"	3.5"
7	20.0"	21.0"	2.5"	3.5"
8	20.0"	21.0"	3.0"	3.5"
9	20.0"	21.0"	3.0"	3.5"
10	22.0"	23.0"	3.0"	4.0"
11	22.0"	23.0"	3.0"	5.0"
12	24.0"	25.0"	3.0"	5.0"

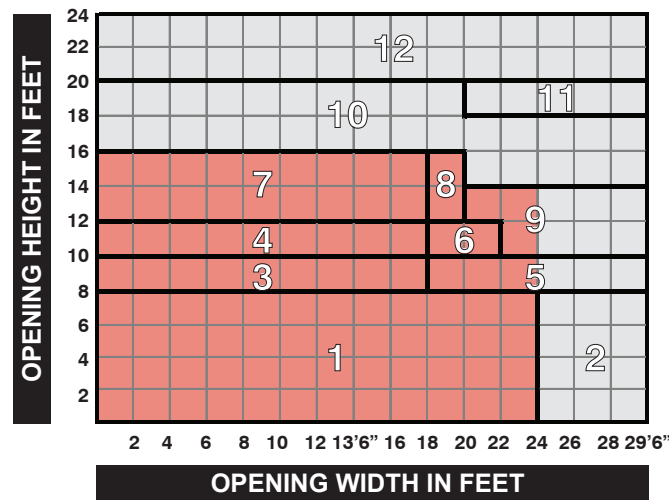
### TYPICAL DETAILS



Dimensions shown do not reflect all available options. Please consult our Architectural Design Support team for more specific information.

\*E = 2-1/2" Standard; 3-1/2" with astragal; 5-1/2" with Featheredge

### DIMENSIONS FOR TYPICAL DETAILS



### OPENING WIDTH IN FEET

Chain Operated

Motor Operated



**The Cookson Company, Inc.**

P.O. Box 23880  
Phoenix, AZ 85063

Phone: (800) 390-8590  
Fax: (866) 448-6804

Visit our website at [Cooksondoor.com](http://Cooksondoor.com)  
Or e-mail us at [Marketing@Cooksondoor.com](mailto:Marketing@Cooksondoor.com)  
[Facebook.com/The.Cookson.Company](https://www.facebook.com/The.Cookson.Company)

© 2012